



## 10 Cleveley Avenue Kings Langley NSW

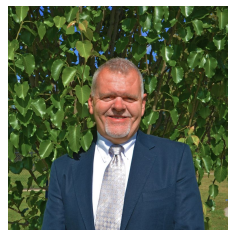
4 2 2

Here it is! Introducing the perfect home to start and grow your family. Situated in the Kings Langley Public School zone, walk to shops and transport and ready for you to add your own special touches to make it your own.

This superb home is situated on a large 692m<sup>2</sup> level block and features 4 generous bedrooms with built/ins, master bedroom with ensuite, formal lounge and dining rooms, modern kitchen with adjoining family area, ducted air conditioning, covered entertaining area, inground pool and plenty of yard left for all the family to enjoy as well as a spacious double garage.

This excellent home ticks all the boxes and is positioned perfectly. This one should not be missed. Hope to see you at the open home. Regards Dennis.

**Price** : \$ 942,000  
**Land Size** : 692 sqm  
**View** : <https://www.elderskingslangley.com.au/sale/nsw/western-sydney/kings-langley/residential/house/5867171>

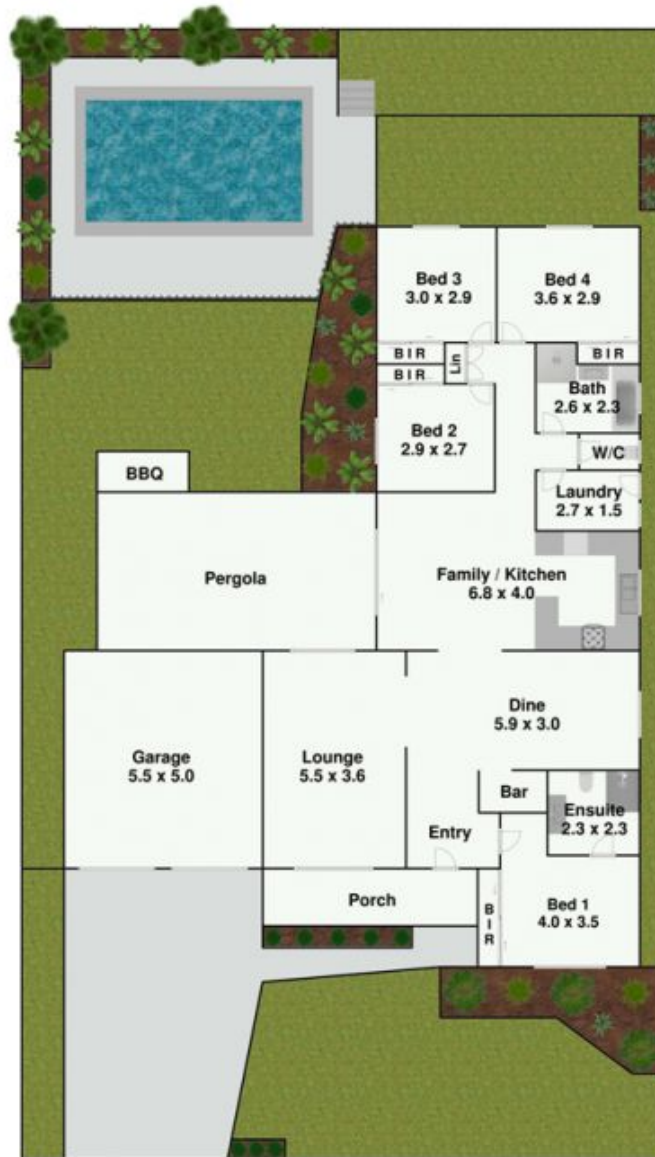


**Shane Smith**  
0429 300 662



# Real Estate

## 10 Cleveley Avenue, Kings Langley.



Plans are for presentation purposes only and are not part of any legal document or title. They should not be used as sole reference. Interested parties should make their own enquiries using other sources. Measurements are approximate.