






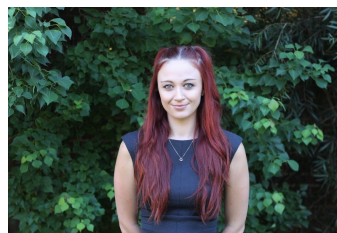
**44/11 Glenvale Avenue Parklea NSW**

2  2  1 

Peacefully positioned in the best complex in the area is this beautiful, well-kept 2-bedroom home that is only walking distance from Stanhope Gardens Shopping Centre, Blacktown Leisure Centre, schools, transport and parks. This property is sure not to be missed!

**View** : <https://www.elderskingslangley.com.au/lease/nsw/western-sydney/parklea/residential/townhouse/6673298>

Featuring 2 generous sized bedrooms, master with ensuite. Well-appointed, modern kitchen with plenty of cupboard space, gas cooking facilities and dishwasher. Good sized lounge room and sun-filled dining area with high ceilings. Modern bathroom and internal laundry with dryer.



**Shaye Harris**  
02 9838 4888



**Abbey Gray**  
02 9838 4888

Other attributes are:

- ? Built in robes to both bedrooms
- ? Large private courtyard area and added balcony
- ? Single garaged car space with extra storage
- ? Split system air conditioning