



31a Holburn Crescent Kings Langley NSW

1  1 

Located in a quiet tree lined street is this cosy granny flat that has been recently renovated and has everything you require. Being only minutes' walk from transport, parks and shops, you sure do not want to miss out on this opportunity!

Featuring a spacious sun-filled living room with air conditioning. Modern kitchen with brand new gas cooking facilities, plenty of storage space and meals area combined. Generous sized bedroom with built in robe and ensuite that has been tastefully renovated.

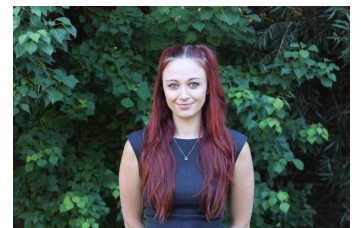
Other features include, internal separate laundry, separate access, LED downlights and floorboards throughout.

We have obtained all information in this document from sources we believe to be reliable; however, we cannot

View : <https://www.elderskinglangley.com.au/lease/nsw/western-sydney/kings-langley/residential/unit/7156120>



Abbey Gray
02 9838 4888



Shaye Harris
02 9838 4888