






20 Simpson Place Kings Langley NSW

5  3  2 

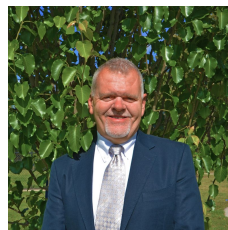
Shane Smith and Elders Kings Langley proudly present to market 20 Simpson Place Kings Langley.

This bespoke property is like nothing else you will find in Kings Langley, in a central location second to none.

Sitting in quiet leafy cul-de-sac on a 714m2 block your new 2 storey home has enough space for the extended family where you can all find your own space to relax and enjoy the peace and quiet this property provides.

Featuring 5 double bedrooms, 4 with built in robes, 3 bathrooms and the master with ensuite and a huge private balcony for those lazy afternoons, massive rumpus room for the kids to play or separate living space if needed, good sized kitchen complete with gas appliances, pantry and breakfast bar.

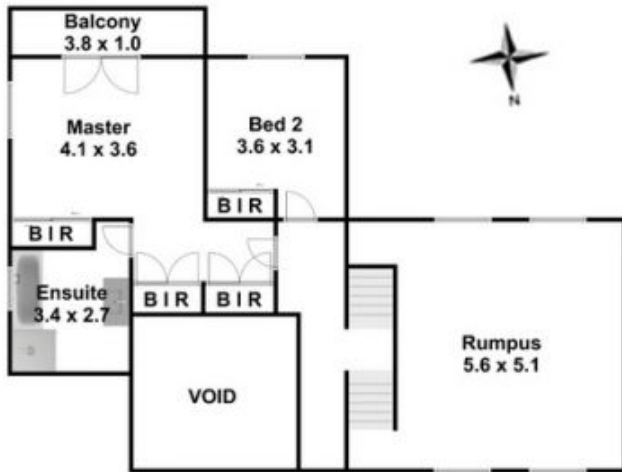
Price : \$ 1,565,000
Land Size : 714 sqm
View : <https://www.elderskingslangley.com.au/sale/nsw/western-sydney/kings-langley/residential/house/7466418>



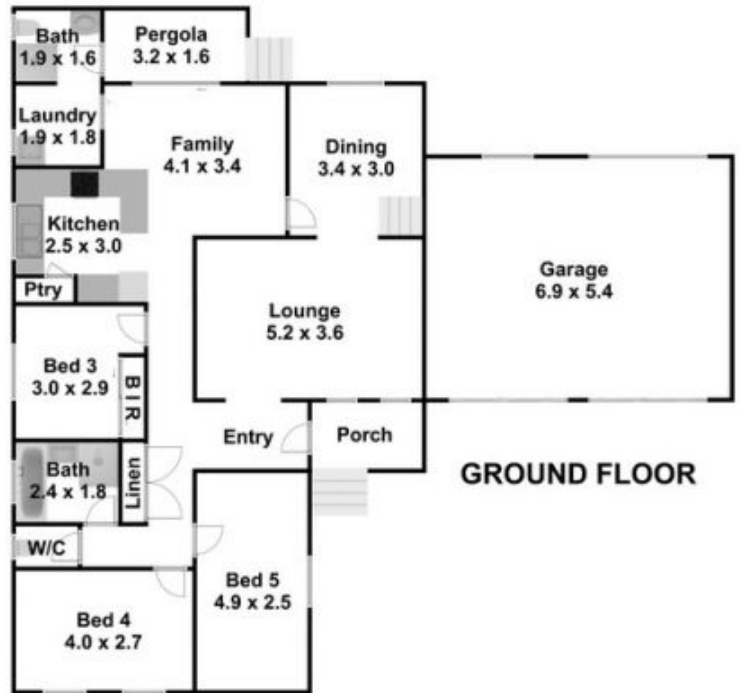
Shane Smith
0429 300 662



Charlotte Keene
02 9838 4888



FIRST FLOOR



GROUND FLOOR